



Series 7, Episode 9

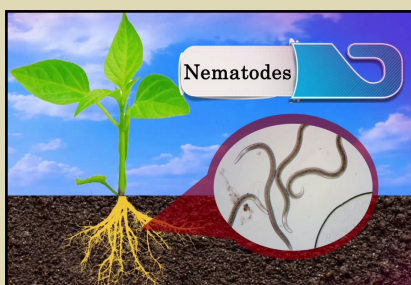
Technology Farm, Nakuru, KENYA

This leaflet contains information on: nematodes, maize seeds, breeding dairy cows, Mahindra Bolero pick-up, GeoPoll

If undelivered, please return to The Mediae Company, PO Box 215-00502, Karen.

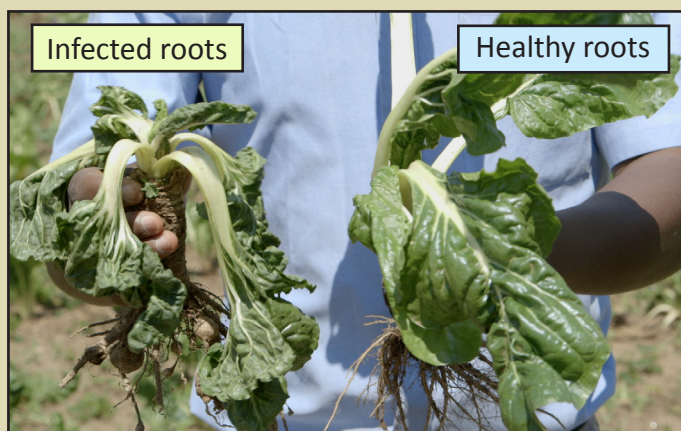
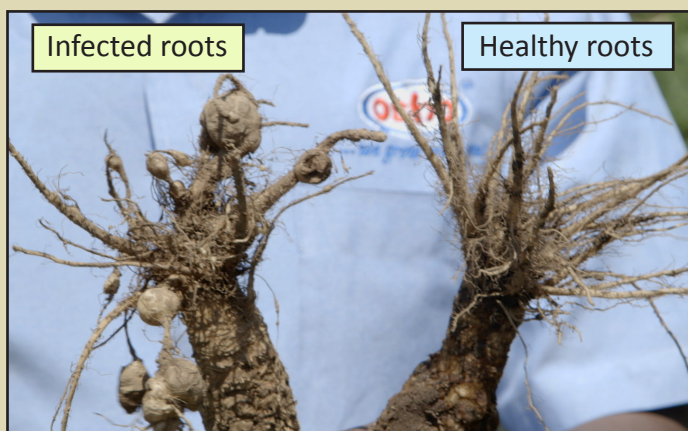
Nematodes

For more information, SMS "PESTS & DISEASES" to 30606



Nematodes are a soil pest which attack the roots of your crop. They are too small to see with just your eyes. Before you plant your crop, do a soil test. It will tell you if your soil has nematodes.

In a good root system, the roots are spread out and you can see lots of hair roots. If the roots have nematodes, you may see round swellings called **galls**. Plants with nematodes also do not stand up well, and the leaves are wilted and stunted.



Kill Nematodes with Nimbecidine and Bio Nematon

Use both **Nimbecidine** and **Bio Nematon**. **Nimbecidine** kills nematode eggs and early larval stages. **Bio Nematon** kills adult nematodes.

Mix 100 ml **Nimbecidine** and 100 ml **Bio Nematon** with 20 litres of water in a knapsack. Drench the soil. Repeat every 3 months.

Nimbecidine and **Bio Nematon** are both organic products. This means that you can drench your soil just before harvest and your crop will not be harmful to eat.



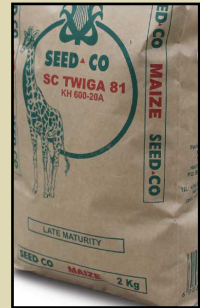
Always wear protective clothing when using chemicals. Wear gum boots, overalls, rubber gloves and a mask.

Maize Seeds

Seed Co. sells maize seeds that do well in different areas. Some yield early, some cope well in dry areas, and some grow well at high altitudes. Choose the right variety for your area for a better harvest.

At least 99% of **SeedCo.** seeds will germinate, so you only need to plant 1 seed per hole. Be aware of fake seeds. Make sure you only buy seeds in the **Seed Co.** packets as shown below. Buy seed from registered agro-vets.

SC Twiga 81



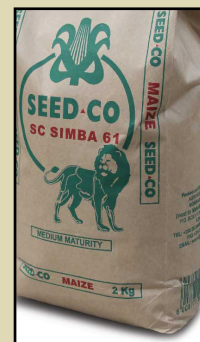
- Twiga 81** grows well at high and medium altitudes. It has double cobs. The cobs are uniform.
- Grows well at 1800-2300 metres above sea level.
 - Matures in 6 months.
 - Is resistant to Blight.
 - Has heavy grains.
 - Yields 36-53 bags per acre.

SC Tembo 73



- Tembo 73** matures late. It has good tolerance to diseases. It does well in areas with high rainfall.
- Matures in 5 months.
 - Grows well at high to medium altitudes.
 - Big and long uniform cobs.
 - Is not affected by Maize Streak Virus, Grey Leaf Spot or Common Leaf Rust.
 - The cobs of **Tembo 73** close well at the top. This means that even with heavy rain, they will not rot.
 - Yields 35-38 bags per acre.

SC Simba 61



- Simba 61 has good resistance to diseases.
- Matures in 4.5 months.
 - Is not badly affected by Grey Leaf Spot, Maize Streak Virus and Cob Rots.
 - Grows well in different places, including dry areas.
 - Has big kernels.
 - Yields 35-45 bags per acre.

SC Punda Milia 529

Punda Milia 529 is tall with 2 cobs. The cobs are uniform.

- Matures in 4 months.
- Can tolerate common maize diseases.
- Copes well in drought.
- Yields 30-40 bags per acre.



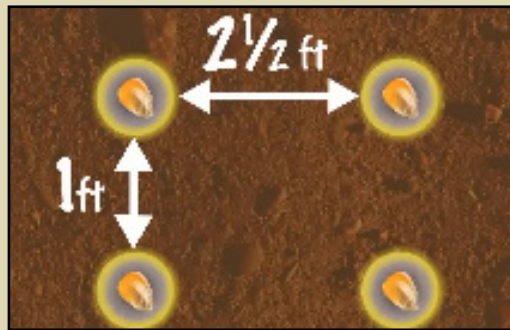
SC Duma 43

An early-maturing variety so you can get 2 crops in 1 year.

- Matures in 3 months.
- Does well at medium to low altitudes.
- Tolerant to drought and heat stress.
- Resistant to Maize Streak Virus (MSV)
- Yields 35 bags per acre.



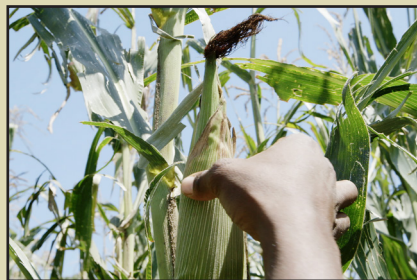
For more information, SMS “MAIZE” to 30606



Planting maize seeds.



Twiga 81 is tall & therefore gives a lot of fodder material for silage



Cobs close well at the top.



The kernels on the cobs are in uniform lines.

Breeding Dairy Cows for Profit

Breeding dairy cows can be a good business. To get a good calf, you must do **Artificial Insemination (AI)**. This is when you choose a bull from a catalogue, and the semen is put into your cow by a vet.

Choosing a bull

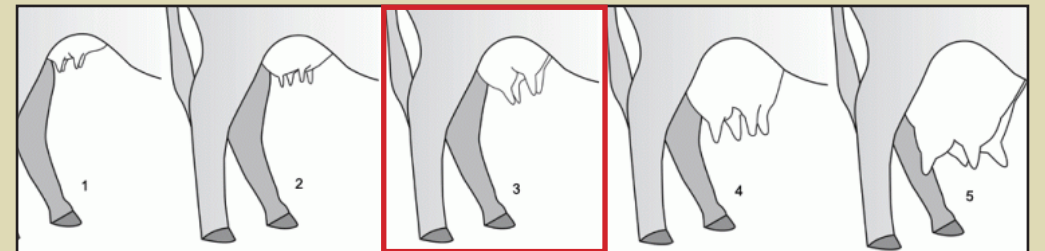


Choose a bull from the **Coopers** CRV catalogue. Get the catalogue from **Coopers** distributors countrywide. You can also get it from livestock exhibitions and trade fairs. **Coopers** semen is 99% reliable.

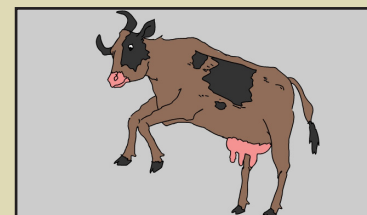
Remember to choose a bull **BEFORE** your cow comes on heat.

Select a Bull that is strong in areas where your dairy cow is weak. When choosing your bull, think about these things:

1. Choose a bull that will give a strong and long-lasting calf.
2. Choose a bull that has good fertility and is immune to diseases.
3. Choose an attractive bull with strong legs. The legs and feet must be well spaced. There must also be space for the udder to fit well. Your cow must attract the eye of the buyer!
4. Look at your cow's udder. Is it too high? Too low? The best is the udder in the red box. If your cow's udder is too low, choose a bull that will give a calf with a high udder.



Signs your cow is on heat:



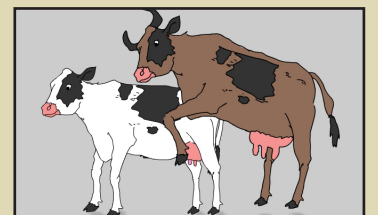
Cow is restless



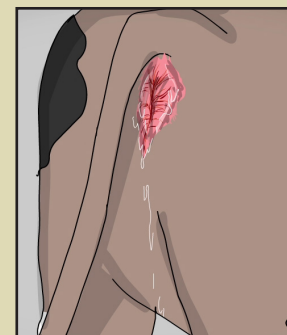
Bellows often



Gives less milk



Allows itself to be mounted and mounts others.



Swollen vulva and clear discharge

The most important sign of heat is the swollen vulva and clear discharge. When you see this call your vet to come and do AI. Heat only lasts 14-18 hours. When you see blood, it is too late.

Keep records so you know when your cow will come on heat

After your cow has had a calf, wait 45 days. After this, keep checking for a swollen vulva and clear discharge.

Record keeping also helps you to avoid in-breeding as you know which semen has been used.

GeoPoll

The world's largest real-time mobile survey platform, reaching a growing network of more than 8 Million subscribers in Kenya. GeoPoll enables organizations to gather quick, accurate and in-depth data insights on anything from consumer preferences to social and development concerns.

For more information, SMS 70555

Mahindra Bolero Pick-Up

Collect milk from a wide area with a **Mahindra Bolero** pick-up from **Simba Corp.**



- Can mount different equipment on the truck.
- 15-20 years of trouble-free use.
- Warranty of 3 years or 100,000 km. Higher than other 2 tonne pick-ups
- Can carry milk cans, luggage, silage and hay.
- Good fuel consumption. 13-15 km per litre of diesel.



Add a milk body to the Mahindra Bolero pick-up



The **Mahindra Bolero** pick-up can carry a 1,500 litre tank to transport milk from the milking parlour to the cooling plant.

- Simple, hygienic and less chance for contamination.
- You only need the driver so save money on labour.
- You can collect milk from over a wide area.

You can buy a **Mahindra Bolero** pick-up with a milk body from **Mahindra** which is under **Simba Corp.** Buy with your farmers group, sacco or cooperative.

How the milk body works



At each farm, the milk is poured into the top of the tank. The truck is driven to the cooling plant.



At the cooling plant, a pipe is attached to the milk tank on your truck.



The other end of the pipe goes into the cooler.

Produced by Mediae



Watch us on Citizen TV on:
Thursday 1.30pm (English)
Sunday 1.30pm (Kiswahili)

For another leaflet
or more information,
SMS 30606



www.cimmyt.org, +254 20 722 4246



www.coopers.co.ke
info.kenya@coopers.co.ke
+254 20 420 6000



www.dlight.com
customerservice@khs.co.ke
+254 20 210 6793



www.ungagroup.com
information@unga.com
+254 719 065 222



www.seedcogroup.com
kassim.owino@agriseed.co.ke
+254 702 934 938



SMS: 70555



www.simbacorp.com
talk2us@simbacorp.com
+254 703 046 000



www.handinhand-ea.org
info@handinhand-ea.org
+254 703 960 766



www.mbeguchoice.com
info@agri-experience.com
+254 719 554 154



www.royalseed.biz
customerservice@khs.co.ke
+254 734 257 635



www.mavunofertilizers.com
info@mavunofertilizers.com
+254 702 891 893



www.cropnuts.com
support@cropnuts.com
+254 790 499 190



www.oshochem.com
marketing@oshochem.com
+254 711 045 000
SMS: 20560