



Series 8, Episode 14

Henry's Farm, Nakuru, KENYA

This leaflet contains information on: solar power systems, tomatoes, mangoes, healthy soil

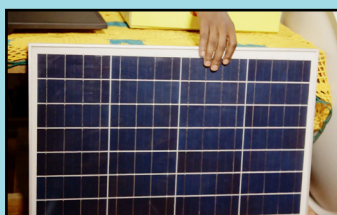
If undelivered, please return to The Mediae Company, PO Box 215-00502, Karen.

Solar Power Systems

For more information, SMS "SOLAR" to 30606

Kerosene is expensive and bad for your health. Solar systems catch sunlight and change it to electricity.

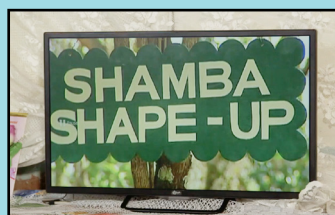
The **Azuri PayGo Solar TV** system contains:



A 50 watt solar panel. This goes on your roof and catches light from the sun.



A battery. This stores the energy from the solar panel. You can plug in your mobile phone to charge.



A 24 inch TV and satellite dish. Get more than 50 TV channels and more than 20 radio channels.



Azuri will install the solar system for free!



4 lights with switches.



A radio that is charged from the battery.



A torch that is charged from the battery.

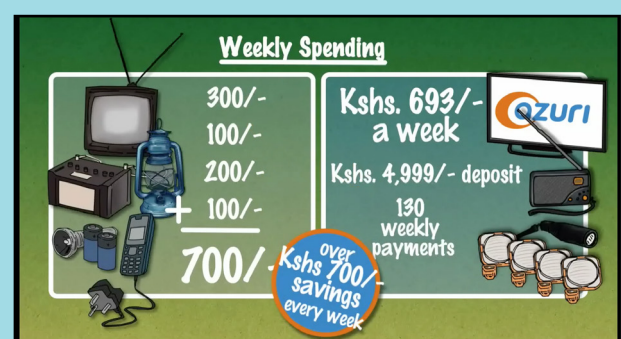
The **Azuri PayGo system** comes with a 2 year warranty. If there is a problem within the first 2 years, **Azuri** will replace the part for free.

Save money with the Azuri PayGo Solar System

Each week, you may spend 300/- on kerosene, 100/- on torch batteries, 200/- charging a car battery to power your TV, and 100/- on phone charging. This is **700/- per week**.

The Azuri system costs **693/- per week**. Once you have paid off your system, your power will be free!

You will save time with the **Azuri** system. You will no longer have to go to town to buy kerosene and charge your phone.



For more information, SMS "PESTS" to 30606

Tomatoes

Plant hybrid seeds, like **Shanty F1**. They mature earlier, give bigger fruits and have a longer shelf life than open pollinated varieties like **Rio Grande**. They are also resistant to many diseases, such as:



Verticillium Wilt



Fusarium Wilt



Tomato Yellow Leaf Curl Virus



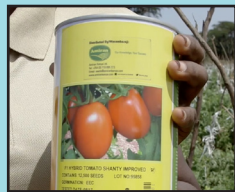
Tomato Mosaic Virus



Tomato Spotted Wilt Virus

Shanty F1

- Hybrid variety.
- 140-160g per fruit.
- Matures in 75 days in the dry season, and 90 days in the rainy season.
- Firm fruit. Shelf life of 28 days at room temperature.
- Resistant to diseases such as Yellow Leaf Curl Virus, Tomato Mosaic Virus and Spotted Wilt Virus, Verticillium Wilt, Bacterial Speck and Nematodes.



Buy seeds in pack sizes of:

- 12,500 seeds for 1 acre
- 2,500 seeds for $\frac{1}{8}$ acre
- 1,000 seeds for a small kitchen garden.



Rio Grande



- Open pollinated variety.
- 90-100 g per fruit.
- Matures in 80 days.
- Shelf life of 14 days.
- Tolerant to Verticillium Wilt and Fusarium Wilt.

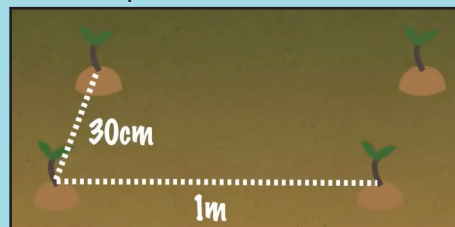
1. Plant seeds in trays

The roots will be less disturbed when transplanting. They will have a better chance of growing to full size. The seedlings will be ready for transplanting after 21 days. Give less water for 5 days before transplanting. This toughens up the seedlings.



2. Transplant seedlings

Space seedlings 30 cm apart in rows 1 metre apart.



Apply fertilizer at planting.

3. Stake the plants

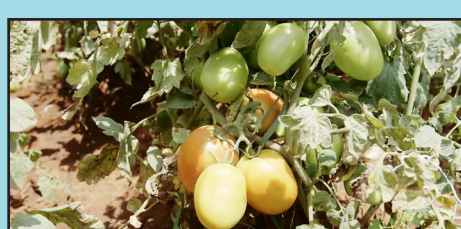
Fruits will rot if they touch the ground. Stake plants to keep the fruits up.



Put in stakes 1 month after transplanting.

4. Topdress

Topdress 3-4 weeks after transplanting, at flowering, and after the first harvest.

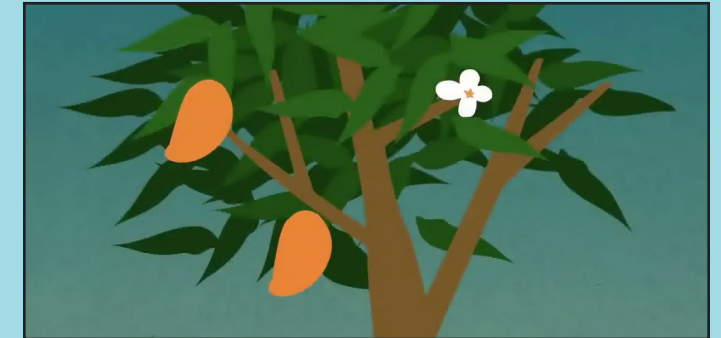


You should get 5-6 harvests over 2 months.

For more information, SMS "MANGOES" to 30606

Mangoes

Mangoes can flower in only 4-5 months after grafting. This early flowering and fruiting weakens young trees. Remove all flowers until the tree is 3-3 ½ years old. You will get a bigger crop.



Powdery Mildew



Powdery Mildew is a fungal disease. It looks like a white powder. You may see it on the flowers. The flowers will abort and die. You will get less fruits.

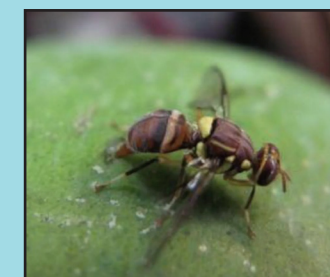
Stop Powdery Mildew with products containing Sulphur.

Mix 40g of **Wetsulf** into 20 litres of water. You can use up to 160g of **Wetsulf** if your Powdery Mildew is very bad. Spray your mango tree. Repeat every 14 days.



Wetsulf is toxic to flowers so do not use it when your tree is flowering. Instead, use **Klassic**. Mix 20 ml of **Klassic** into 20 litres of water. Spray your mango tree when it is flowering. Repeat every 7 days.

Fruit Flies



Fruit flies lay eggs in your mangoes. When the eggs hatch, the larvae burrow into the flesh. They feed on the fruit which causes it to rot.

The rotting fruits then fall to the ground, just before the larvae turn into pupae.



Spray **Biomagic** in the dry season. **Biomagic** is a fungus. It infects the flies and kills them.

Mix 80-100ml of **Biomagic** into 20 litres of water. Spray your mango trees once per week for 4 weeks.



Keep your shamba clean

Rotten fruits will attract fruit flies and other pests. Fruit flies will lay eggs in rotten fruits.

Remove all fruits from the ground around your mango trees.



Stirrup is a general insecticide. It can be used to stop pests on fully grown mango fruits. It also prevents fruit flies.

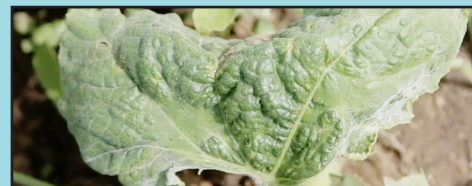
Mix 8ml of **Stirrup** into 20 litres of water. Spray your mango trees.



Healthy Soil

For healthy soil, use both organic (manure and compost) and inorganic fertilizers. Apply good farming methods such as mulching and crop rotation. Make sure that your crop does not have any pests or diseases. If it does, fertilizers will not work as well.

For more information, SMS "FERTILIZER" to 30606



This plant has a virus

Mulch

Mulch reduces water loss. It protects your soil from the sun. It stops soil being washed away by rain.

Sawdust is not a good mulch. It rots and makes the soil more acidic. The crop will not be able to use nutrients from the soil. It will not grow well.

Use old leaves, maize stovers, dried grass or other vegetation as mulch.



Fertilizers

Mavuno makes fertilizers for different stages of your crop, such as **Mavuno Planting** and **Mavuno Topdressing**.

Mavuno makes fertilizers specific to your crop, e.g. **Mavuno for Maize**. Mavuno fertilizers contain many different nutrients for a healthy crop and big harvest.

Buy Mavuno fertilizers from agrovets countrywide.



PRIMARY NUTRIENTS

Nitrogen (N) is needed for leaf growth.

Phosphorous (P) is needed for root growth

Potassium (K) is for good fruit formation.

SECONDARY NUTRIENTS

Calcium (Ca) for good firm skin on the fruit.

Magnesium (Mg) is important in giving leaves their green colour and making plant food.

Sulphur (S) is needed to make plant protein.

MICRO NUTRIENTS

Copper (Cu), Molybdenum (Mb), Manganese (Mn) and Boron (B) are all needed to make good quality fruits.

Produced by Mediae



Watch us on Citizen TV on:
Saturday 1.30pm (English)
Sunday 1.30pm (Kiswahili)

For another leaflet
or more information,
SMS 30606



www.coopers.co.ke
info.kenya@coopers.co.ke
+254 20 420 6000



www.amirankenya.com
amiran@amirankenya.com
0800 720 720



www.wildaid.org



Alama ya Ubora
www.ungagroup.com
information@unga.com
+254 719 065 222



www.mavunofertilizers.com
info@mavunofertilizers.com
+254 702 891 893



www.pik-potsdam.com



www.simbacorp.com
talk2us@simbacorp.com
+254 703 046 000



www.seedcogroup.com
kassim.owino@agriseed.co.ke
+254 702 934 938



www.azuri-technologies.com
customer@azuri-technologies.com
+254 796 536 063
SMS: 22213



SMS: 70555
bizdev@geopoll.com



www.cropnuts.com
support@cropnuts.com
+254 790 499 190



www.villageindustrialpower.com
info@villageindustrialpower.com
+254 746 607 199
+254 701 257 233



www.oshochem.com
marketing@oshochem.com
+254 711 045 000
SMS: 20560