



Series 8, Episode 7

Karen Langat's Farm, Uasin Gishu, KENYA

This leaflet contains information on: soil tests, onions, chickens, Same Tiger tractor

If undelivered, please return to The Mediae Company, PO Box 215-00502, Karen.

Soil Tests

For more information, SMS "SOIL" to 30606

A soil test will tell you how good your soil is. The results will tell you what to add to make your soil better. Take a soil sample and send it to **CropNuts** for testing. Call **CropNuts'** soil testing service **Daktari wa Udongo** on **0790 499190**.

How to take a soil sample



1. Take samples in a zig zag across your field. Take 5 samples from each field. Fields with different soil types, slopes and drainage should be sampled separately.



2. Use a soil auger or panga to take a sample at least 1 foot deep.



3. Mix the samples in a bucket thoroughly. Put ½ kg of the sample in a **CropNuts** bag. Send it for testing.

Make sure the soil sample is labelled clearly with your name, phone number, field and the crop you want to plant.

In the lab, the sample is tested for 3 primary nutrients and 10 secondary nutrients. It is also tested for organic matter to see if there is enough nitrogen in the soil and to check soil acidity.



Your soil test results

You will receive a 2-page report.

Page 1 shows the nutrient levels of your soil. **Red** means the nutrient level is either too high or too low. **Green** means the nutrient level is good.

Page 2 gives you the actions to take to make your soil better. For example, if your soil is too acidic, the report will say to add lime, and will tell you how much to add.

Customer: Mediae Company				Crop: Rhodes Grass	
Address: 786/45355				Crop Stage: Comments	
Farm Name: Karen Farm				Condition: Moist	
Contact Person: Judy				To maintain the correct for Karen Farm	
Field: Karen Farm				Top Soil	
Parameter	Unit	Result	Grade Low	Grade High	Low Optimum High
pH (H ₂ O)		5.27	5.50	7.50	
Phosphorus	ppm	4.15	20.0	50.0	
Potassium	ppm	522	120	1960	
Calcium	ppm	859	1400	303	
Magnesium	ppm	232	100	< 161	
Sulfur	ppm	33.5	3.00	8.00	
Organic Matter	%	4.26	0.20	0.50	
		0.20	0.20	30.0	

Customer: Mediae Company				Crop: Rhodes Grass	
Address: 786/45355				Crop Stage: Comments	
Farm Name: Karen Farm				Condition: Moist	
Contact Person: Judy				To maintain the correct for Karen Farm	
Field: Karen Farm				Top Soil	
Parameter	Unit	Result	Grade Low	Grade High	Low Optimum High
pH (H ₂ O)		5.27	5.50	7.50	
Phosphorus	ppm	4.15	20.0	50.0	
Potassium	ppm	522	120	1960	
Calcium	ppm	859	1400	303	
Magnesium	ppm	232	100	< 161	
Sulfur	ppm	33.5	3.00	8.00	
Organic Matter	%	4.26	0.20	0.50	
		0.20	0.20	30.0	

Onions

Onions can be a profitable crop. You can get 12-15 tonnes from an acre. They mature earlier than many other crops. After spending 4-6 weeks in the nursery, they can mature in 2 ½ months.

Plant onion seeds in nursery

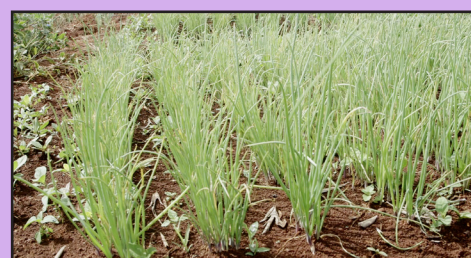


- You will not be wasting space in your main field with seeds that do not germinate.
- It is easier to protect a nursery from pests and diseases.
- It is easier to protect a nursery against the weather, such as too much sun.

Transplant your onion seedlings

Plant your seedlings 5-7 cm apart, in rows 15 cm apart.

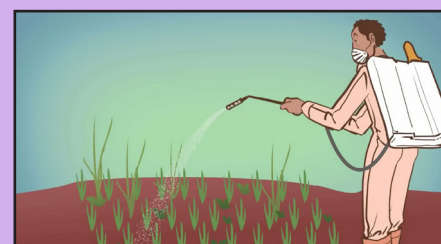
Transplant your seedlings after 4-6 weeks.



Kill weeds with Galigan

Galigan is a post-emergence herbicide. This means that it can kill weeds after the onions have germinated, without killing the onions. It kills many different weeds, including grasses and broad-leafed weeds.

Use **Galigan** 1 week after transplanting. If you planted your onions directly into the field, use Galigan when the onion seedlings have 2-3 leaves.



1. Mix 50ml of **Galigan** in 20 litres of water. Shake well.

2. Spray your crop evenly from side to side. Spray close to the ground so there is no wastage if it is a windy day.

3. After 1 week, you will see the weeds dying. Since it controls weeds over a long time, repeated spraying may not be necessary.

Using **Galigan** is faster and easier than weeding manually. It can keep weeds away for the whole season. Buy **Galigan** from agrovets. Buy in pack sizes 50ml, 250 ml or 1 litre.

Always wear protective gear when using chemicals

Chemicals can be harmful to your health. Some chemicals can irritate the eyes or skin. They may also irritate the lungs if breathed in.

- Wear goggles to protect your eyes.
- Wear a mask to stop you breathing in the chemicals.
- Wear overalls and gum boots to protect your clothes and skin.
- Wear gloves to protect your hands.

Store chemicals away from children and animals.



Chickens

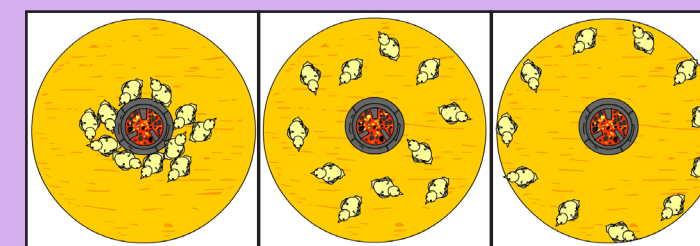
Keep your chicks, growers and layers apart. They need different feeds at different ages.



Have a footbath with disinfectant at the entrance of your chicken house. It stops you from bringing pests and diseases from outside to your chickens through your shoes.

Chicks - 3 days to 8 weeks old

Keep your chicks in a round brooder with no corners. Corners are bad because chicks move towards them and get trapped. Some may die.



Too cold

Just right

Too hot

Make sure that there is good ventilation in the chicken house. Have a light or a jiko for warmth. Look at the chicks to see if they are too hot or too

If they are close to the heat, they are too cold. If they are far from the heat, they are too hot. If they are evenly spread, the temperature is correct.

Feed your chicks **Fugo Chick & Duckling Mash**. Make sure that there is always clean water available.



After 2 months, your chicks should weigh 380-400 g.

Weigh your chicks using a bucket and scales:

1. Weigh the empty bucket on the scales e.g. **100g**
2. Put 5 chicks in the bucket and weigh on the scales e.g. **2050g**
3. Work out the weight of the chicks without the bucket e.g. **2050 – 100 = 1950g**
4. Work out the average weight of each chick. e.g. **1950 ÷ 5 = 390g**



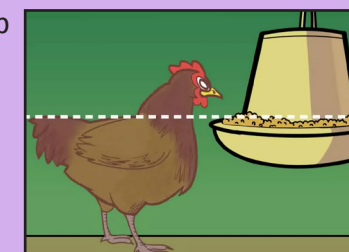
Growers - 8 weeks to point of lay at 3 months



Feed your growers **Fugo Growers Mash**. It will help your growers to gain weight and have good bone structure.

The feeder should be at the same level of the chicken's back. You need 1 feeder for 50 birds.

Make sure that water is always available.



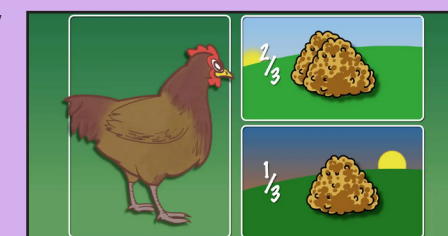
Layers - point of Lay



Your layers should be about 1.5 kg when they start to lay. Feed them with **Fugo Compleat Meal**. The layers will lay eggs of a good size with a strong shell and yellow yolk.

Remember to change feeds gradually over 3 days.

Give your layers 140g of food per day. Give $\frac{2}{3}$ in the morning and $\frac{1}{3}$ in the evening. If layers eat too much they will become too heavy and will be poor layers.



Same Tiger tractor

For more information, SMS "TRANSPORT" to 30606



The **Same Tiger** tractor from **Simba Corp** speeds up farming. It is very easy to use.

A tractor is an investment. It can do many different jobs such as ploughing, planting and transporting. Make money from your tractor by hiring out to your neighbours.

The **Same Tiger** is affordable. Buy with cash, or get finance from the bank. You could buy as a group and share the costs.

Simba Corp will come to your shamba to service it and to do repairs. It is easy to get spare parts.

The **Same Tiger** comes with a discal plough. The equipment is high quality.

The **Same Tiger** has good fuel consumption.



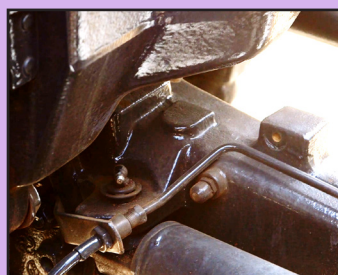
Each day, before you use your tractor, check:



The water level in the radiator.



The oil with the dipstick.



The greasing points. Use a 3 stroke grease gun.



That the air filter is free of dust.

Produced by Mediae



Watch us on Citizen TV on:
Thursday 1.30pm (English)
Sunday 1.30pm (Kiswahili)

For another leaflet
or more information,
SMS 30606



www.coopers.co.ke
info.kenya@coopers.co.ke
+254 20 420 6000



www.amirankenya.com
amiran@amirankenya.com
0800 720 720



www.wildaaid.org



Alama ya Ubora
www.ungagroup.com
information@unga.com
+254 719 065 222



www.mavunofertilizers.com
info@mavunofertilizers.com
+254 702 891 893



www.pik-potsdam.com



www.simbacorp.com
talk2us@simbacorp.com
+254 703 046 000



www.seedcogroup.com
kassim.owino@agriseed.co.ke
+254 702 934 938



www.azuri-technologies.com
customer@azuri-technologies.com
+254 796 536 063
SMS: 22213



SMS: 70555
bizdev@geopoll.com



www.cropnuts.com
support@cropnuts.com
+254 790 499 190



www.villageindustrialpower.com
info@villageindustrialpower.com
+254 746 607 199
+254 701 257 233



www.oshochem.com
marketing@oshochem.com
+254 711 045 000
SMS: 20560